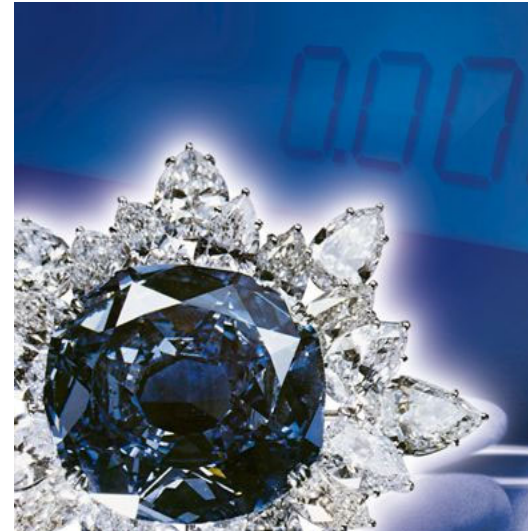
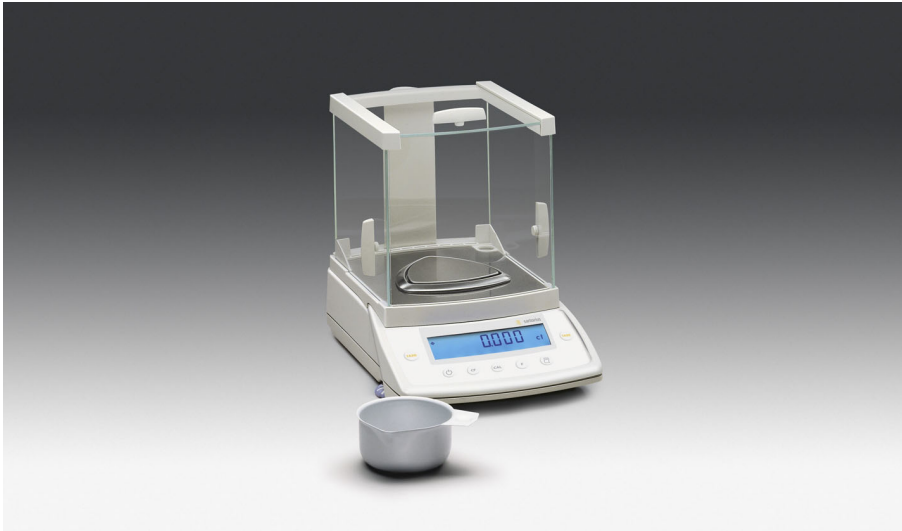




Sartorius Gem^{plus} Carat scale GCA1603S-0CE



Key features:

- Verified for legal metrology (legal for trade) at the factory. This model meets all requirements of non-automatic weighing instruments for use as a legal measuring instrument according to the EC directive on non-automatic weighing instruments 90/384 EEC, the European Standard EN 45 501 and the OIML Recommendation R76. Immediately after internal calibration and adjustment is performed, the scales of this model name may be used in legal-for-trade applications.
- Built-in, motorized calibration weight. For the highest weighing accuracy at the touch of a key.
- isoCAL calibration and adjustment function. Through regular, fully automatic calibration, this function ensures that the balance's high level of accuracy remains constant
- Excellent, high-contrast, easy-to-read display, with especially large digits (16.5 mm)
- Monolithic weigh cell technology – rugged, precise, reliable – year after year
- Very easy to operate; all keys feature positive click action; clear and logically arranged keypad
- Mass unit conversion by toggling between any 2 of 19 units of measure at the touch of a key – e.g., g and ct
- Innovative all-glass draft shield, with smooth-action doors that open extremely wide; ideally designed for thorough cleaning (removable weighing chamber base plate) and amply sized weighing chamber
- Four digital filter levels allow the balance to be optimally adapted to the particular ambient conditions at the place of installation
- Stainless steel gem tray is part of the standard equipment supplied

Model	GCA1603S-0CE
Weighing capacity	1,600 ct
Readability	0.001 ct

Specifications

Model	GCA1603S-OCE
Accuracy class ¹⁾	Ⓢ
Weighing capacity	1.600 ct
Readability	0.001 ct
Verification scale interval, e ¹⁾	0.01 ct
Minimum capacity, Min ¹⁾	0.1 ct
Tare range (subtractive)	1,600 ct
Response time (average)	≤ 2 s
Allowable ambient operating temperature:	
- with "isoCAL" function	+10...+30 °C
- without "isoCAL" function	+15...+25 °C
Net weight, approx.	6.3 kg
Weighing pan size (inner diameter)*	80 mm Ø
Weighing chamber height (weighing pan to draft shield cover)	162 mm
Dimensions (WxDxH)	213x342x270 mm
AC power source/power requirements	AC adapter STNG6 230 V or 115 V, +15% to -20% (protection rating IP20)
Power consumption (average)	maximum 16 VA; typical 8 VA
Built-in interface	RS232C-S/V24-V28

¹⁾ CD= Council Directive 90/384/ECC for non-automatic weighing instruments; applicable to the European Economic Area



* Three-sided weighing pan: Ø = diameter of inner circle.

Key accessories	Order no.
Data printer with date, time and statistics functions	YDP20-OCE
External rechargeable battery pack	YRB05Z
Carrying case	YDB01CP
SartoCollect, software for the data communication between PC and any Sartorius instrument (incl. cable 26 Pin/9 Pin, 2 m)	YSC02



Data printer



SartoCollect

Sartorius AG
Weender Landstrasse 94-108
37075 Goettingen, Germany

Phone +49.551.308.0
Fax +49.551.308.3289

info.mechatronics@sartorius.com
www.sartorius-mechatronics.com

Specifications subject to change without notice.

Current status: October 2008
Version: 1.0